

描述 / Descriptions

1.2A 表面贴装玻璃钝化整流桥，薄型 ABF 封装。
1.2A Surface Mount Glass Passivated Bridge Rectifier, ABF thin package.

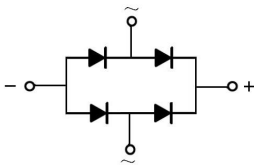
特征 / Features

玻璃钝化芯片，反向电压：1000V，正向电流：1.2A，快速反向恢复时间，适用于表面贴装。无卤产品。
Glass Passivated Chip Junction, Reverse Voltage: 1000V, Forward Current: 1.2A, Fast reverse recovery time, Designed for Surface Mount Application. Halogen free product.

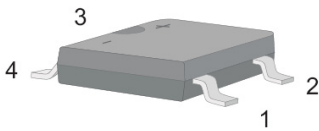
用途 / Applications

一般用途。
General purpose.

内部等效电路 / Equivalent Circuit

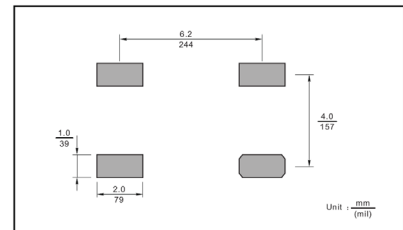


引脚排列 / Pinning



PIN	DESCRIPTION
1	Input Pin (~)
2	Input Pin (~)
3	Output Anode (+)
4	Output Cathode (-)

The recommended mounting pad size



印章代码 / Marking

见印章说明。See Marking Instructions.

极限参数 / Absolute Maximum Ratings(Ta=25°C)

参数 Parameter	符号 Symbol	数值 Rating	单位 Unit
Maximum Repetitive Peak Reverse Voltage	V_{RRM}	1000	V
Maximum RMS Voltage	V_{RMS}	700	V
Maximum DC Blocking Voltage	V_{DC}	1000	V
Average Rectified Output Current at $T_c = 125^\circ\text{C}$	I_o	1.2	A
Peak Forward Surge Current 8.3 ms Single Half Sine Wave Superimposed on Rated Load	I_{FSM}	40	A
Typical Junction Capacitance ^(Note1)	C_j	30	pF
Typical Thermal Resistance ^(Note2)	$R_{\theta JA}$	75	$^\circ\text{C}/\text{W}$
Operating and Storage Temperature Range	T_j, T_{stg}	-55~150	$^\circ\text{C}$

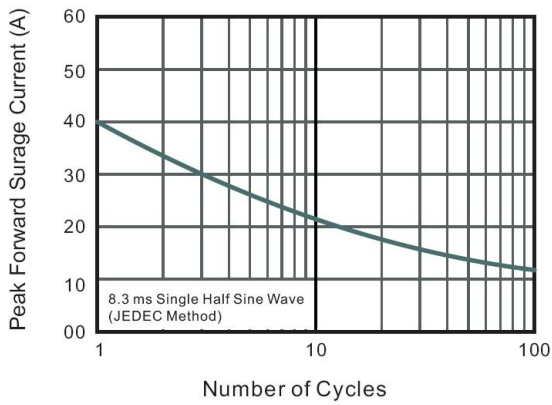
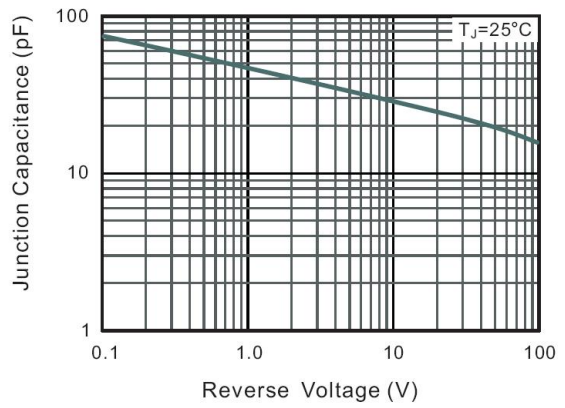
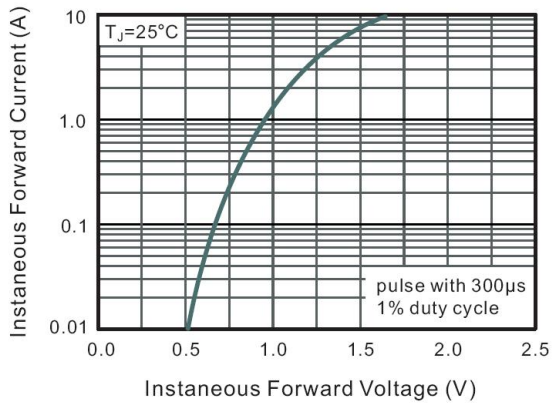
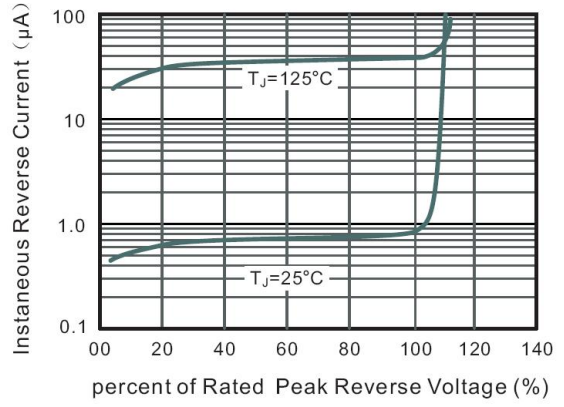
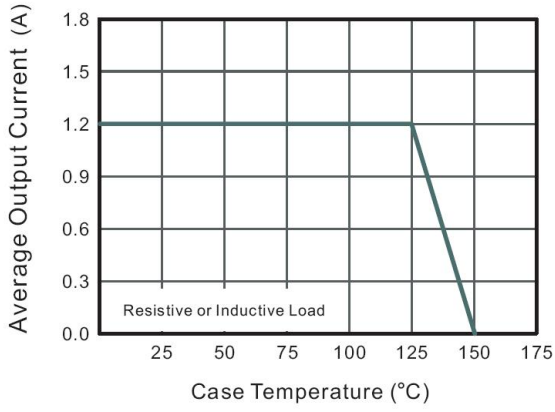
Note:

- 1.Measured at 1MHz and applied reverse voltage of 4 V D.C.
2. Mounted on glass epoxy PC board with 4×1.0" X 1.0" (2.54 X 2.54 cm) copper pad.

电性能参数 / Electrical Characteristics(Ta=25°C)

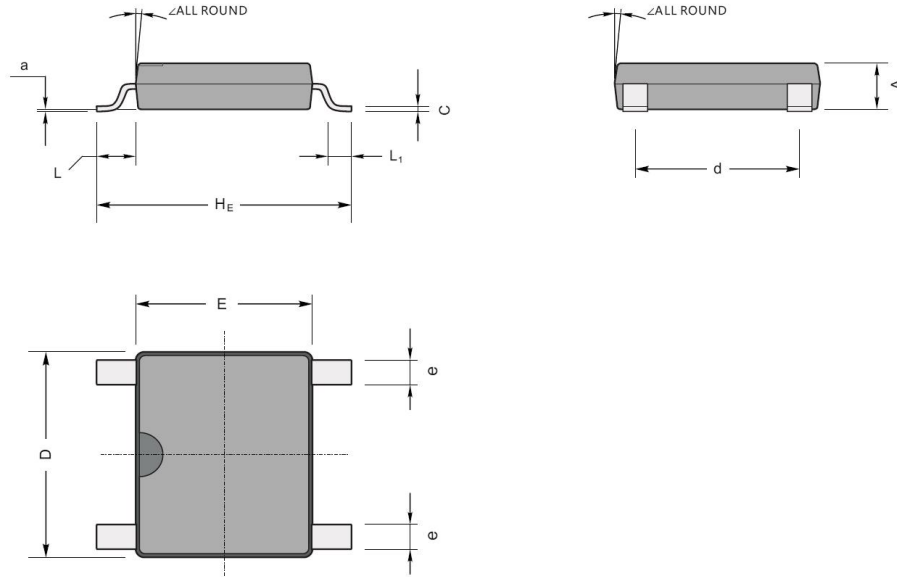
参数 Parameter	符号 Symbol	测试条件 Test Conditions	数值 Rating	单位 Unit
Forward Voltage per element	V_F	$I_F=1.2\text{A}$	1.3	V
Maximum DC Reverse Current at Maximum DC Blocking Voltage	I_R	$T_a=25^\circ\text{C}$	5.0	μA
		$T_a=125^\circ\text{C}$	50	μA
Maximum Reverse Recovery Time	t_{rr}	$I_F=0.5\text{A}$ $I_R=1.0\text{A}$ $I_{rr}=0.25\text{A}$	200	ns

电参数曲线图 / Electrical Characteristic Curve



外形尺寸图 / Package Dimensions

ABF



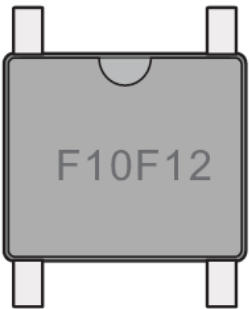
ABF mechanical data

UNIT		A	C	D	E	H_E	d	e	L	L_1	a	\angle
mm	max	1.2	0.22	5.2	4.5	6.4	4.2	0.7	0.95	0.6	0.2	7°
	min	1.0	0.15	4.9	4.2	6.0	3.8	0.5				
mil	max	47	8.7	205	177	252	165	28	37	24	8	
	min	39	5.9	193	166	236	150	20				

印章说明 / Marking Instructions

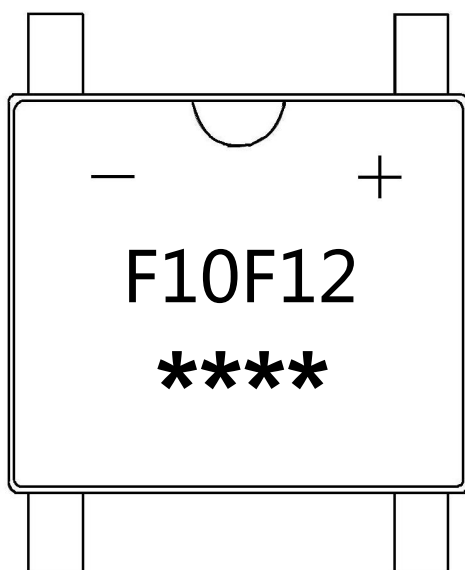
Marking

Type number	Marking code
FTB10F-12	F10F12



The diagram shows a rectangular component with four pins (two on top, two on bottom) and a semi-circular notch on the top edge. The marking code 'F10F12' is printed in the center of the component's body.

印章说明 / Marking Instructions



说明：

F10F12： 为型号代码

****： 为生产批号追溯码，第1个*为年月代码，后面3个*为当月小批号代码

Note:

F10F12： Product Type Code

****： Lot No. Code , The 1st * means:YM Code , The last 3 * means:little Lot
No Code

回流焊温度曲线图(无铅) / Temperature Profile for IR Reflow Soldering(Pb-Free)



说明：

- 1、预热温度 25 ~ 150°C，时间 60 ~ 90sec;
- 2、峰值温度 245±5°C，时间持续为 5±0.5sec;
- 3、焊接制程冷却速度为 2 ~ 10°C/sec.

Note:

- 1.Preheating:25~150°C, Time:60~90sec.
- 2.Peak Temp.:245±5°C, Duration:5±0.5sec.
3. Cooling Speed: 2~10°C/sec.

耐焊接热试验条件 / Resistance to Soldering Heat Test Conditions

温度：260±5°C

时间：10±1 sec.

Temp.:260±5°C

Time:10±1 sec

包装规格 / Packaging SPEC.

卷盘包装 / REEL

Package Type 封装形式	Units 包装数量					Dimension 包装尺寸 (unit: mm ³)		
	Units/Reel 只/卷盘	Reels/Inner Box 卷盘/盒	Units/Inner Box 只/盒	Inner Boxes/Outer Box 盒/箱	Units/Outer Box 只/箱	Reel	Inner Box 盒	Outer Box 箱
ABF	5000	2	10000	5	50000	13" × 15	336X336X40	380X335X366

使用说明 / Notices